

Nalbach Rotary Auger Filler

*High Speed, High Accuracy,
Low Maintenance Filler*

nalbach

ENGINEERED FOR PERFORMANCE™



Nalbach Engineering's Rotary Auger Filler meets your production speeds, improves fill accuracy and dramatically reduces maintenance and downtime

Nalbach Rotary Auger Fillers feature the time tested Nalbach gear driven rotary base and product settling systems used on the company's industry leading NECOFLO and NECOFILL-II filling systems. Hundreds of these systems are in use today by the leading food and beverage companies around the world.

Nalbach Rotary Auger Fillers also feature Nalbach's Servo Driven Auger Fillers with touch screen control. The PLC controlled brushless, direct drive, servo motor systems provide superior fill accuracy and reliability while dramatically reducing mechanical failures and downtime by eliminating most moving parts. The user-friendly graphical menus allow operators to easily access the product memory for fast setup and accurate control of all filling operations.

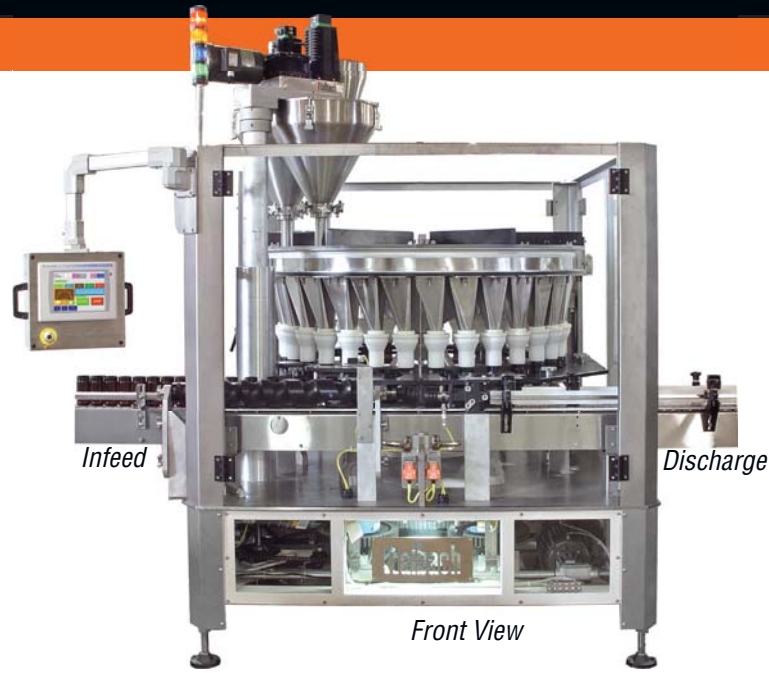
In addition to this impressive set of features, the Nalbach Rotary Auger Filler adds several additional ones including: Nalbach's Advanced Seal Module, Push-Button Fill-Head / Auger Height Adjustment, Speed Profiling, and Active Weight Control.

The Advanced Seal Module provides faster fills, higher throughput, cleaner operation, improved fill accuracy, and improved product settling. With Nalbach's patented "elliptic hyperboloid" design, product flow is improved providing faster fills and higher throughput while the "seal bellows" improves reliability of the filler-container seal and reduces attenuation of the product settling vibration. This system provides clean fills, improved fill accuracy, and improved product settling.

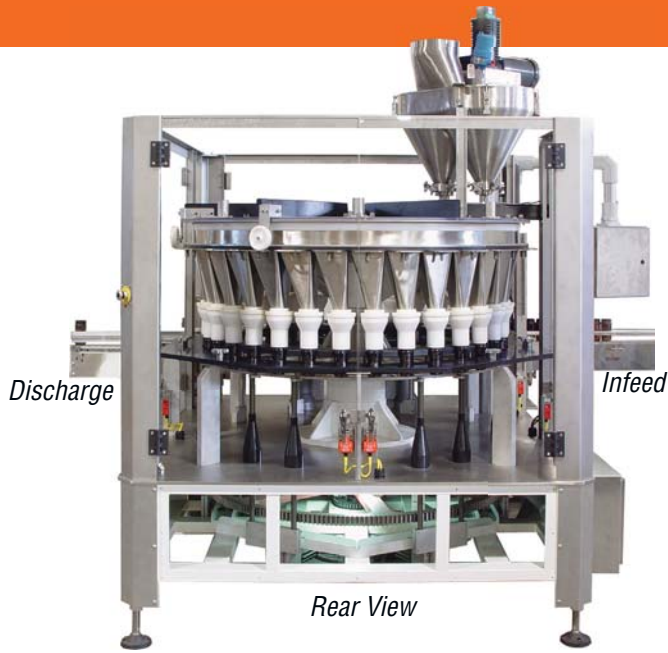
Push-Button fill-head / auger height adjustment provides a fast, easy and accurate method to make changeovers from one container size to another insuring perfect setups with no alignment or guesswork.

Speed Profiling synchronizes the speed of the rotary base with the servo driven auger filler(s) to insure and maintain fill accuracies during start-up, shut-down and at any speed the system is set to run.

The Active Weight Control system interfaces with a check weigher to make on-the-fly adjustments to compensate for variations in product density to insure accurate fills and minimize product "give-away".



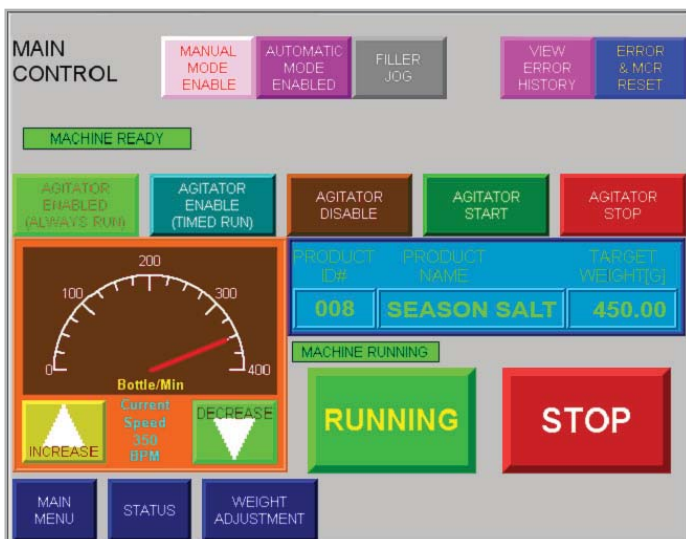
with a focus on fill accuracy and a minimum of maintenance



Servo driven auger fillers, self-centering-tooling, push-button fill head / auger height adjustment, speed profiling

Benefits

- Advanced Seal Module for higher throughput, cleaner operation and improved product settling.
- Push-Button fill head / auger height adjustment for fast, easy and accurate changeovers.
- Speed Profiling to insure and maintain fill accuracies during start-up, shut-down and at any speed the system is set to run.
- Gear driven rotary base eliminates problems associated with chain / belt drive systems such as alignment issues, chain-stretch, and sprocket wear significantly reducing backlash and maintenance.
- Touch screen with intuitive icon-based graphical user interface for greater accuracy and control.
- Servo motor shaft resolution of 1/5000 revolution delivers superior fill accuracy.
- Self centering tooling results in faster changeovers, and cleaning times.
- Rugged construction, structural steel frame and FDA approved product contact materials result in exceptional durability.
- Air or motor driven; bottom, side or step product settling systems are tailored to meet the unique needs of each customer's container/product combination.
- The product memory is capable of storing filling parameters for 120 products with one button recall.
- Upside-Down Container Detector to stop the machine if an upside-down container is encountered.
- Weight setup software utility sets up fill parameters automatically.



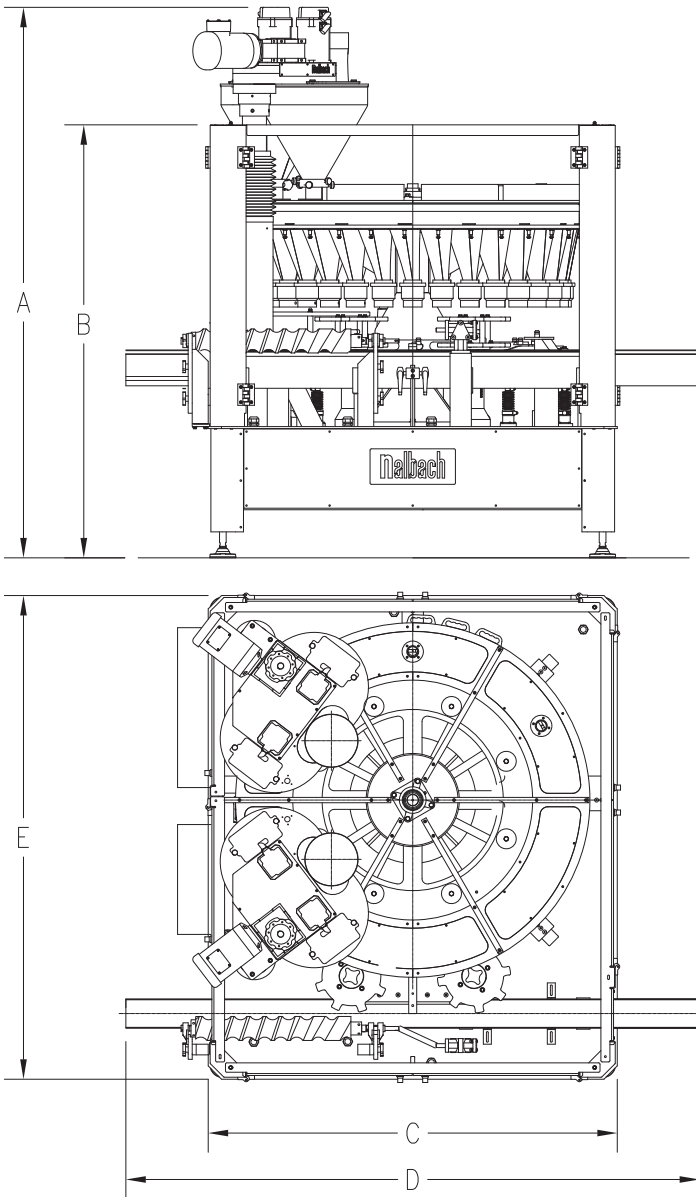
Touch screen user interface

About Nalbach Engineering Company

Founded in 1945, our Company has earned its dominant reputation for quality and performance in the design and manufacture of a complete line of powder filling equipment and plastic bottle unscramblers. In addition, we offer aerosol fillers, turnkey packaging lines, and system integration services. A member of PMMI since 1958, Nalbach Engineering has developed equipment for a widely diverse client roster of Blue Chip companies and has installed systems in 45 countries around the globe.



Dimensions



Dimension Inches (mm)	Base Size	
	36	56
A	115 (2921)	115 (2921)
B	80 (2032)	80 (2032)
C	56 (1422)	76 (1930)
D	104 (2642)	120 (3048)
E	70 (1778)	90 (2286)

Specifications subject to change without notice.

Specifications

Electric and Controls

Display:

User-friendly touch screen

Electrical:

System voltage and frequency configured to meet customer specifications

Electrical Controls:

PLC - Digital Solid State

Enclosure:

NEMA 12 or Optional NEMA 4

Software Features:

- Adjustable Machine Parameters
- Adjustable Agitator Speed
- Adjustable Auger Drive Speed
- Adjustable Acceleration and Deceleration
- Auger Jog
- Hopper Empty
- Recycle Timers
- Trial Fill for Product Setup

Filling Head

Auger Drive:

Brushless Servo Motor, Direct Drive
Rated for 3 HP (2.2 KW)

Auger Speed:

50 to 1,400 RPM

Agitator Motor:

2 HP Variable Speed Motor

Agitator Drive:

Direct Gear Belt Drive

Construction:

Stainless Steel and other FDA approved Product Contact Parts

Speed and Accuracy

Filling Speed:

Up to 640 Fills Per Minute

Filling Accuracy:

Up to $\pm 0.25\%$ (.0025)

Optional Accessories

Level Control:

Signals Infeed and Controls Product Level

Conveyors:

Complete range of infeed and discharge conveyor types available

Vibration:

Air, Motor, or Magnetic Bottom, Side or Step Product Settling Systems

Infeed:

Product Infeed Machinery, Auger and Vibration Conveyors

Checkweighers:

Checkweighers available for use with Active Weight Control System

PLC:

Various Commercial PLC Controllers are available

Nalbach Engineering Company, Inc.

621 East Plainfield Road, Countryside, IL 60525 U.S.A.

Phone: 708/579-9100 • Fax: 708/579-0122

www.nalbach.com

© 2009 Nalbach Engineering Company, Inc.