



Cartridge Unscrambler (Tube Sorter)

NECOSORT-TS

Automatically sort and feed cartridges (fiber or plastic tubes for caulking compounds, lubricants, etc.) from a random bulk supply and place them horizontally on a synchronized, flighted belt take-away conveyor.

Nalbach Engineering's NECOSORT Cartridge Unscrambler reduces maintenance and downtime.

The NECOSORT cartridge unscrambler sorts a wide range of cartridge sizes. Easy release clamps and unitized change parts make changeovers a fast and simple operation allowing a single employee with no special skills to complete a changeover in twenty minutes or less. Designed with only two moving parts, virtually eliminating downtime, the NECOSORT carries a three (3) year warranty!

The NECOSORT comes standard with a PLC and color touch screen control. This control system provides an intuitive icon-based graphical user interface making training, set-up and operation simple and straightforward. The control system is also a powerful foundation for providing the features and integration capabilities required for a range of production environments. Capabilities include: "recipe" control, cartridges per minute indication, fault / warning indications and logging, "run permissible signal", discrete I/O and system integration via RS232/485, Data Highway (DH/ DH+), Ethernet, or DeviceNet.

Benefits

- With no reciprocating motions, complicated mechanisms or hard to adjust container handling parts, maintenance and downtime is virtually eliminated.
- Stainless steel change parts and other cartridge contact parts provide for exceptional durability.
- Color touch screen control with intuitive icon-based graphical user interface making training, set-up and operation simple and straightforward.
- Large number of pockets permits slow sorting of each individual cartridge, providing for remarkably gentle product handling, minimizing the chances of damage.
- Designed to work with differing numbers of "chutes", each set of change parts is optimized for maximum performance and throughput for each cartridge size.
- Unitized change parts for major cartridge changes results in a minimum of changeover time.
- Designed with only two moving parts, virtually eliminating downtime, the NECOSORT carries a three-year warranty.

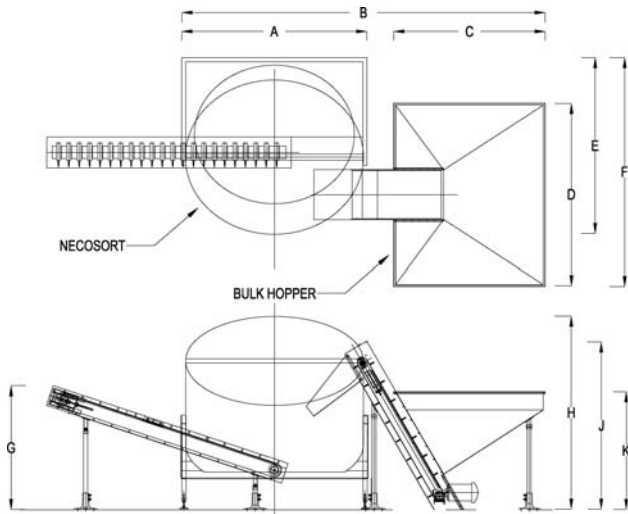


About Nalbach Engineering Company

Founded in 1945, our Company has earned its dominant reputation for quality and performance in the design and manufacture of a complete line of filling equipment for powders, granulars, flakes and aerosols. In addition, Nalbach Engineering manufactures plastic bottle unscramblers and offers turnkey packaging lines as well as system integration services. A member of PMMI since 1958 Nalbach Engineering has developed equipment for a widely diverse client roster of Blue Chip companies and has installed systems in 45 countries around the globe.



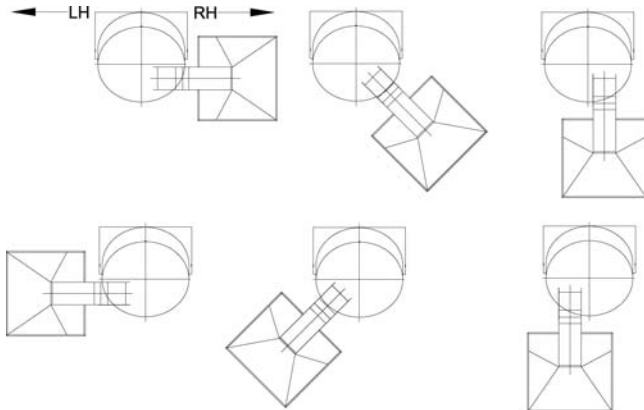
Dimensions



Dimension inches (mm)	Machine Model		
	NS-72-TS	NS-85-TS	NS-96-TS
A	77.0 (1956)	91.0 (2311)	103.0 (2616)
B	163.0 (4140)	172.0 (4369)	193.0 (4902)
C	72.0 (1829)	72.0 (1829)	72.0 (1829)
D	88.0 (2235)	88.0 (2235)	88.0 (2235)
E	75.0 (1905)	85.0 (2159)	91.0 (2311)
F	100.0 (2540)	110.0 (2794)	116.0 (2946)
G	60.0 (1524)	60.0(1524)	60.0(1524)
H	81.0 (2057)	93.0 (2362)	97.0 (2464)
J	81.0 (2057)	81.0 (2057)	81.0 (2057)
K	56.0 (1422)	56.0 (1422)	56.0 (1422)

Notes:

- Dimensions shown are with the optional 70 cubic foot bulk hopper. Additional sizes available.
- Several options available to position the bulk hopper relative to the unscrambler. Left hand or right hand discharge available. See below.



Machine Operation

The machine consists of a hopper with a stationary floor that is inclined at a 30-degree angle. Around the outside edge of the floor is a series of moving pockets or chutes, which will accept your cartridge and carry it to the high side of the hopper. At this point, the cartridge is oriented bottom down and placed in a chute to be discharged on a built-in and synchronized conveyor.

NECOSORT Model	Max. Speed CPM
72	100
85	120
96	160

The NECOSORT will handle various size cartridges. Speeds listed in the above chart are for a standard 11.25" high x 1.9" diameter cartridge. Consult the factory for applications requiring different sizes or speeds.

Specifications

Electric and Controls

Electrical:

System voltage and frequency configured to meet customer specifications

Electrical Controls:

Digital Solid State

Construction

Stainless steel machine and change parts.

Optional Accessories

Discharge Direction:

Left hand or right hand bottle discharge.

Conveyors:

Conveyor extensions or modifications to fit your line.

Bulk Hopper & Elevator:

40, 70 or 125 cubic foot bulk hoppers available.

Bulk Handling Systems:

Complete automated bulk handling systems available.

Nalbach Engineering Company, Inc.

621 East Plainfield Road, Countryside, IL 60525 U.S.A.

Phone: 708/579-9100 • Fax: 708/579-0122

www.nalbach.com

© 2004 Nalbach Engineering Company, Inc.

